

The Exo Tattoo is an innovative and creative project that transforms the Astera LED Tubes in “works of art” for exclusive and emotional lighting effects.



1.

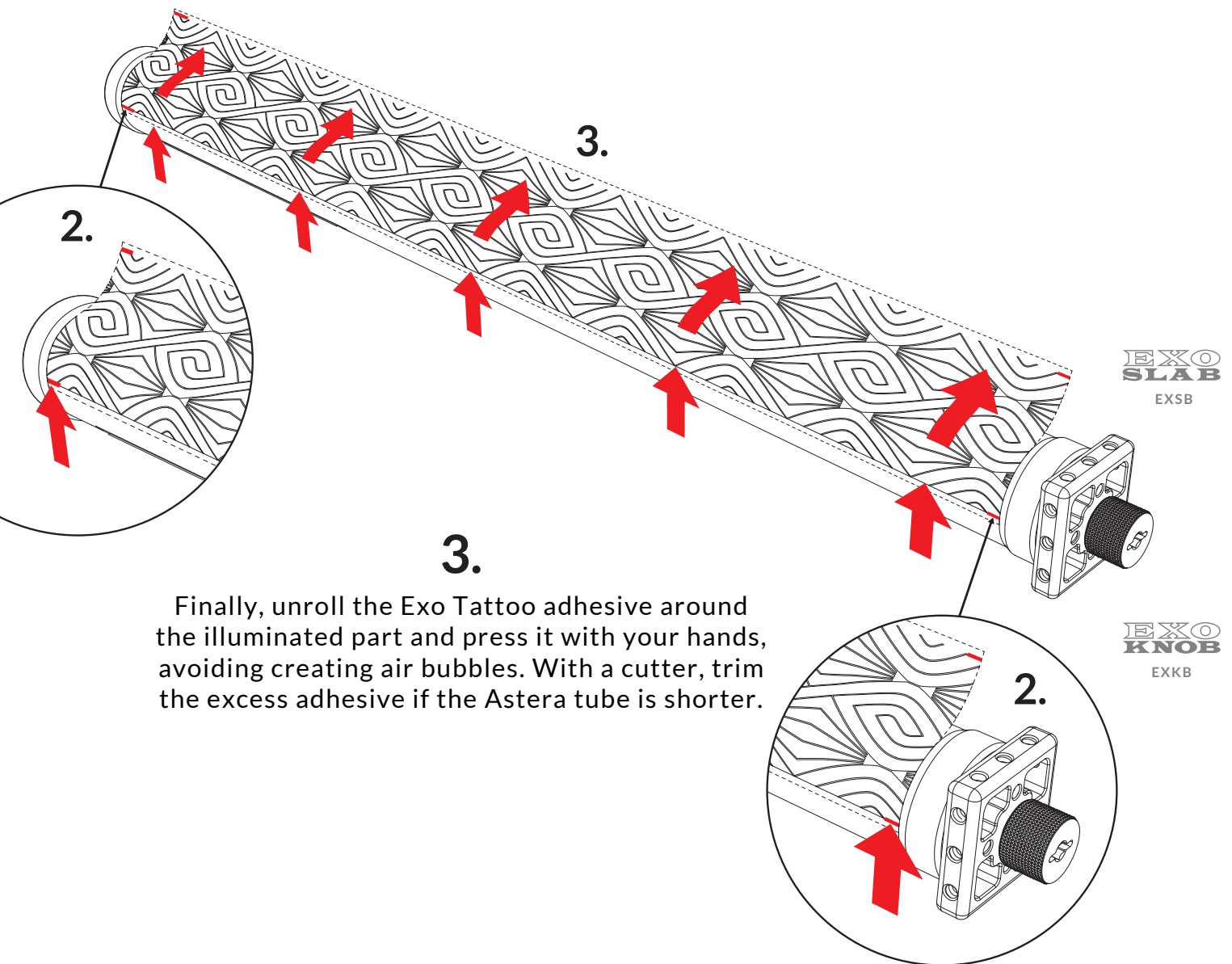
Place the Astera tube on a work surface, then mount the Exo Slab + Exo Knob to fix the tube in the most convenient position to begin mounting the Exo Tattoo adhesive.

If you don't have the Exo Slab you can block the Astera tube with Gaffer Tape.

Turn on the Astera tube for better alignment.

2.

Align the two reference lines of the sticker on the left and right on the demarcation line of the illuminating part of the Astera to fix the Exo Tattoo sticker by pressing with your hands. The sticker may be slightly longer than the Astera tube because some tubes are slightly longer while others are shorter.



3.

Finally, unroll the Exo Tattoo adhesive around the illuminated part and press it with your hands, avoiding creating air bubbles. With a cutter, trim the excess adhesive if the Astera tube is shorter.